



Thermal overload relay RANGE 17-25A Class 10 For mounting on 3MT7 contactors Size 0,1,2 Main circuit: Screw Auxiliary circuit: Screw Manual Automatic reset

product brand name	SINOVA
product designation	Thermal overload relay
product type designation	3MU7
General technical data	
size of overload relay	Size 1
size of contactor can be combined company-specific	3MT7 Size 1, 2
power loss [W] for rated value of the current at AC in hot operating state	16.2 W
• per pole	5.4 W
insulation voltage with degree of pollution 3 at AC rated value	690 V
surge voltage resistance of main circuit rated value	6 kV
shock resistance according to IEC 60068-2-27	15g / 11 ms
reference code according to IEC 81346-2	F
Substance Prohibitance (Date)	07/01/2022
Weight	0.175 kg
Ambient conditions	
installation altitude at height above sea level maximum	2 000 m
ambient temperature	
• during operation	-5 ... +55 °C
• during storage	-25 ... +70 °C
temperature compensation	-5 ... +55 °C
relative humidity during operation	10 ... 95 %
Main circuit	
number of poles for main current circuit	3
type of voltage for main current circuit	AC
operating voltage	
• rated value	690 V
• at AC-3 rated value maximum	690 V
operating frequency rated value	50 ... 60 Hz
operational current rated value	25 A
operational current at AC-3 at 400 V rated value	25 A
operating power at AC-3	
• at 400 V rated value	11 kW
• at 690 V rated value	22 kW
Auxiliary circuit	
number of NC contacts for auxiliary contacts	1
• note	for contactor disconnection
number of NO contacts for auxiliary contacts	1
• note	for message "Tripped"
operational current of auxiliary contacts at AC-15	

<ul style="list-style-type: none"> • at 24 V • at 110 V • at 690 V 	4.17 A 3.64 A 0.7 A		
operational current of auxiliary contacts at DC-13			
<ul style="list-style-type: none"> • at 24 V • at 110 V • at 220 V 	4.17 A 0.45 A 0.2 A		
Short-circuit protection			
design of the fuse link			
<ul style="list-style-type: none"> • for short-circuit protection of the main circuit with type of assignment 2 required • for short-circuit protection of the auxiliary switch required 	gG: 40 A, Type-2 co-ordination fuse gG: 10 A		
Installation/ mounting/ dimensions			
mounting position	22.5° Inclination forward and backward & ± 90° rotation, in relation to normal vertical mounting plane		
fastening method	Contacteur mounting		
height	64 mm		
width	44 mm		
depth	92 mm		
Connections/ Terminals			
type of electrical connection			
<ul style="list-style-type: none"> • for main current circuit • for auxiliary and control circuit 	screw-type terminals screw-type terminals		
type of connectable conductor cross-sections for main contacts			
<ul style="list-style-type: none"> • solid or stranded • finely stranded with core end processing 	1x (1 ... 6 mm ²) 1x (1 ... 10 mm ²)		
type of connectable conductor cross-sections for auxiliary contacts			
<ul style="list-style-type: none"> • solid or stranded • finely stranded with core end processing 	1x (1 ... 4 mm ²) 1x (1 ... 4 mm ²)		
tightening torque			
<ul style="list-style-type: none"> • for main contacts with screw-type terminals • for auxiliary contacts with screw-type terminals 	1.85 N·m 1.2 N·m		
design of the thread of the connection screw			
<ul style="list-style-type: none"> • for main contacts • of the auxiliary and control contacts 	M4 M3.5		
Electrical Safety			
protection class IP on the front according to IEC 60529	IP20		
touch protection on the front according to IEC 60529	finger-safe, for vertical contact from the front		
Display			
display version for switching status	Trip indicator		
Approvals Certificates			
General Product Ap- proval	Test Certificates	other	Environment



[Type Test Certificates/Test Report](#)

[Confirmation](#)

[Environmental Confirmations](#)

Further information

Information on the packaging

<https://support.industry.siemens.com/cs/ww/en/view/109813875>

Information- and Downloadcenter (Catalogs, Brochures,...)

<https://www.siemens.com/ic10>

Industry Mall (Online ordering system)

<https://mall.industry.siemens.com/mall/en/en/Catalog/product?mlfb=3MU7110-0QA0>

Cax online generator

<http://support.automation.siemens.com/WWW/CAXorder/default.aspx?lang=en&mlfb=3MU7110-0QA0>

Service&Support (Manuals, Certificates, Characteristics, FAQs,...)

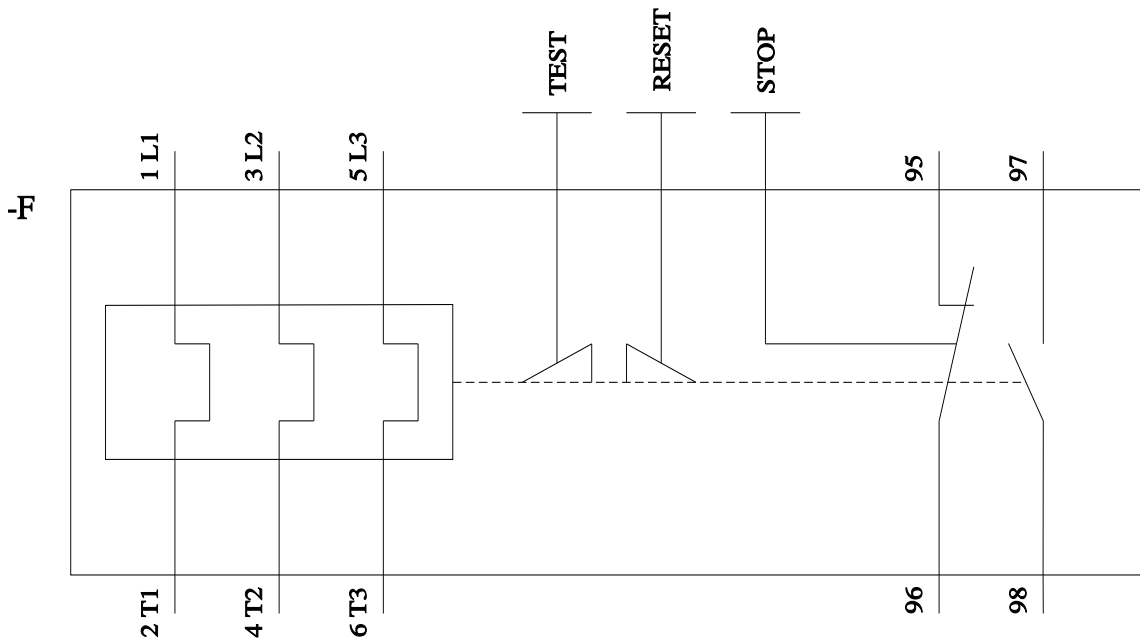
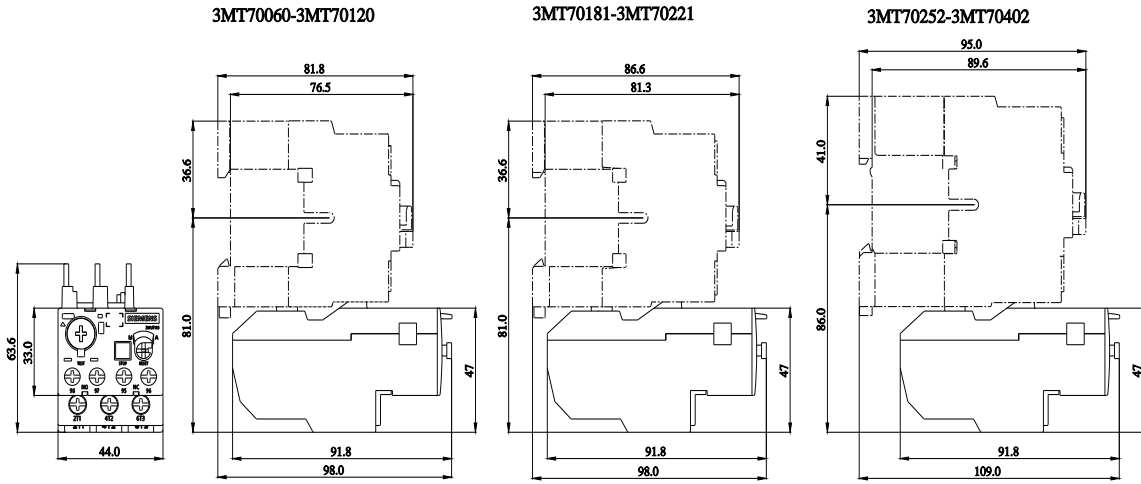
<https://support.industry.siemens.com/cs/ww/en/ps/3MU7110-0QA0>

Image database (product images, 2D dimension drawings, 3D models, device circuit diagrams, EPLAN macros, ...)

http://www.automation.siemens.com/bilddb/cax_de.aspx?mlfb=3MU7110-0QA0&lang=en

Characteristic: Tripping characteristics, I_t, Let-through current

<https://support.industry.siemens.com/cs/ww/en/ps/3MU7110-0QA0/char>



last modified:

4/4/2025 